

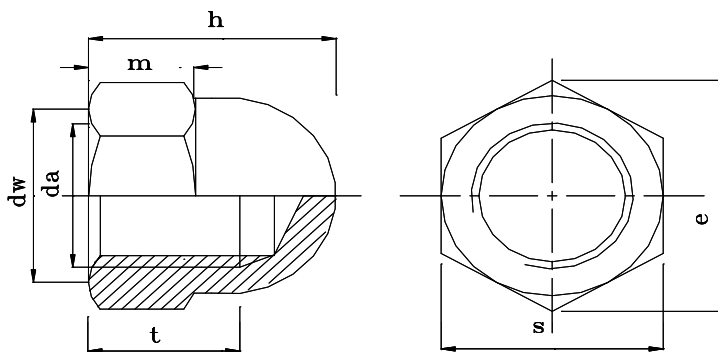
# LANKA FASTENER LIMITED

PHASE 2, I.P.Z., KATUNAYAKE 11420, SRI LANKA.

Tel : + 94 (0)11 2252750 Fax : + 94 (0)11 2252749

PRODUCT SPECIFICATION : DIN 1587  
 PRODUCT RANGE : M5, M6, M8, M10 & M12 in Steel & Stenless Steel

| METERIAL               | CARBON STEEL                            | STENLESS - A2 | STENLESS - A4 |
|------------------------|---|---------------|---------------|
| Material Specification | 1015                                    | 304           | 316           |
| Product Class          | 6                                       | 70            | 80            |
| Proof Stress           | 600                                     | 700           | 800           |
| Hardness (HRC)         | 18 - 25                                 | 22 - 34       | 22 - 34       |
| Thread (ISO)           | 6H                                      | 6H            | 6H            |
| Finish                 | Yellow / Blue Zinc & Plain              | Passivated    | Passivated    |
| Proof load KN          | As specified in ISO 898/2 & ISO 898 / 6 |               |               |



| Type of Measurements | M5    | M6    | M8    | M10   | M12   |
|----------------------|-------|-------|-------|-------|-------|
| S                    | 8.00  | 10.00 | 13.00 | 17.00 | 19.00 |
|                      | 7.78  | 9.78  | 12.73 | 16.73 | 18.67 |
| h                    | 10.00 | 12.00 | 15.00 | 18.00 | 22.00 |
|                      | 9.64  | 11.57 | 14.57 | 17.57 | 21.48 |
| e                    | 9.23  | 11.54 | 15.00 | 19.61 | 21.92 |
|                      | 8.79  | 11.05 | 14.38 | 18.90 | 21.10 |
| t                    | 7.79  | 8.29  | 11.35 | 13.35 | 16.35 |
|                      | 7.21  | 7.71  | 10.65 | 12.65 | 15.65 |
| m                    | 4.00  | 5.00  | 6.50  | 8.00  | 10.00 |
|                      | 3.70  | 4.70  | 6.14  | 7.64  | 9.64  |
| da                   | 5.75  | 6.75  | 8.75  | 10.80 | 13.00 |
|                      | 5.00  | 6.00  | 8.00  | 10.00 | 12.00 |
| dw                   | 8.00  | 10.00 | 13.00 | 17.00 | 19.00 |
|                      | 6.80  | 8.90  | 11.60 | 15.60 | 17.40 |
| Unit Weight          | 2.34  | 4.47  | 8.94  | 19.08 | 27.59 |

(All linear dimensions in mm)



Manufacturer of Steel & Stainless Steel Nuts

