

# LANKA FASTENER LIMITED

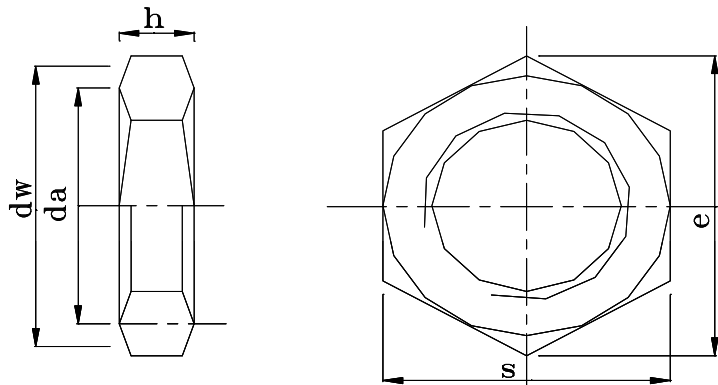
PHASE 2, I.P.Z., KATUNAYAKE 11420, SRI LANKA.

Tel : + 94 (0)11 2252750 Fax : + 94 (0)11 2252749

**PRODUCT SPECIFICATION** : **DIN 439**  
**PRODUCT RANGE** : M3, M4, M5, M6, M8, M10, M12, M14, M16 & M20 in Steel  
M3, M4, M5, M6, M8, M10, M12, M14 & M16 in Stainless Steel  
**Fine thread from M8 upwards**

| MATERIAL               | CARBON STEEL                            | STAINLESS - A2 | STAINLESS - A4 |
|------------------------|---|----------------|----------------|
| Material Specification | SAE 1010 / 1015                         | 304            | 316            |
| Product Class          | 04                                      | 035            | 040            |
| Proof Stress           | 400                                     | 350            | 400            |
| Hardness - HRC (min.)  | 18                                      | 22             | 22             |
| Thread (ISO)           | 6G / 6H                                 | 6H             | 6H             |
| Finish                 | Yellow / Blue Zinc & Plain*             | Passivated     | Passivated     |
| Proof load KN          | As specified in ISO 898/2 & ISO 898 / 6 |                |                |

\* - Blue Zinc Plating Free of Cr 6+



| Type of Measurements | M3   | M4   | M5   | M6    | M8    | M10   | M12   | M14   | M16   | M20   |
|----------------------|------|------|------|-------|-------|-------|-------|-------|-------|-------|
| <b>S</b>             | 5.50 | 7.00 | 8.00 | 10.00 | 13.00 | 17.00 | 19.00 | 22.00 | 24.00 | 30.00 |
|                      | 5.32 | 6.78 | 7.78 | 9.78  | 12.73 | 16.73 | 18.67 | 21.67 | 23.67 | 29.16 |
| <b>h</b>             | 1.80 | 2.20 | 2.70 | 3.20  | 4.00  | 5.00  | 6.00  | 7.00  | 8.00  | 10.00 |
|                      | 1.55 | 1.95 | 2.45 | 2.90  | 3.70  | 4.70  | 5.70  | 6.42  | 7.42  | 9.10  |
| <b>e</b>             | 6.34 | 8.07 | 9.23 | 11.54 | 15.00 | 19.61 | 21.92 | 25.38 | 27.69 | 34.62 |
|                      | 6.01 | 7.66 | 8.79 | 11.05 | 14.38 | 18.90 | 21.10 | 24.49 | 26.75 | 32.95 |
| <b>da</b>            | 3.45 | 4.60 | 5.75 | 6.75  | 18.75 | 10.80 | 13.00 | 15.10 | 17.30 | 21.60 |
|                      | 3.00 | 4.00 | 5.00 | 6.00  | 18.00 | 10.00 | 12.00 | 14.00 | 16.00 | 20.00 |
| <b>dw</b>            | 5.50 | 7.00 | 8.00 | 10.00 | 13.00 | 17.00 | 19.00 | 22.00 | 24.00 | 30.00 |
|                      | 4.60 | 5.90 | 6.90 | 8.90  | 11.60 | 15.60 | 17.40 | 20.50 | 22.50 | 27.70 |
| <b>Unit Weight</b>   | 0.24 | 0.45 | 0.69 | 1.34  | 2.78  | 6.19  | 8.82  | 13.39 | 17.91 | 33.56 |

(All linear dimensions in mm)  
(Unit Weight - Kg per 1000 pcs.)



Manufacturer of Steel & Stainless Steel Nuts

