

# LANKA FASTENER LIMI

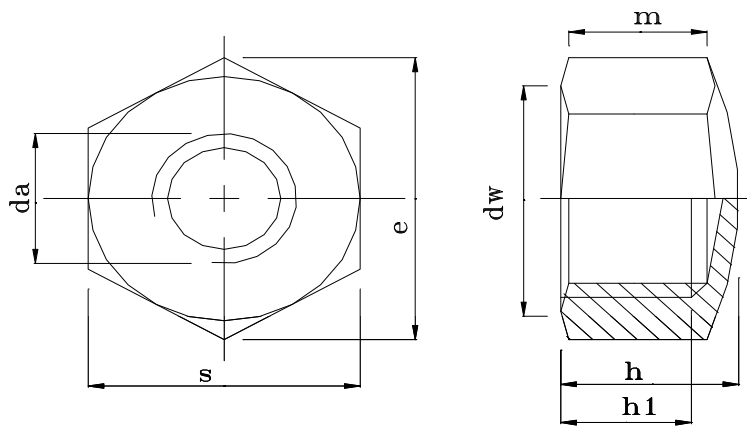
PHASE 2, I.P.Z., KATUNAYAKE 11420, SR

Tel : + 94 (0)11 2252750 Fax : + 94 (0)11

**PRODUCT SPECIFICATION** : **DIN 917**  
**PRODUCT RANGE** : M5, M6, M8, M10 & M12 in Steel & Stainless Steel

MATERIAL	CARBON STEEL	STAINLESS - A2	STAINLESS -
Material Specification	SAE 1010 / 1015	304	316
Product Class	6	70	80
Proof Stress	600	700	800
Hardness - HRC (min.)	18	22	22
Thread (ISO)	6G / 6H	6H	6H
Finish	Yellow/Blue Zinc & Plain *	Passivated	Passivated
Proof load KN	As specified in ISO 898/2 & ISO 898 / 6		

\* - Blue Zinc Plating Free of Cr 6+



Type of Measurements	M5	M6	M8	M10	M12
S	8.00	10.00	13.00	17.00	19.00
	7.78	9.78	12.73	16.73	18.67
h	7.00	9.00	12.00	14.00	16.00
	6.64	8.64	11.57	13.57	15.57
e	9.23	11.54	15.00	19.61	21.92
	8.79	11.05	14.38	18.90	21.10
h <sub>1</sub>	5.65	7.50	10.00	11.35	13.20
	5.15	7.00	9.50	10.80	12.70
da	5.75	6.75	8.75	10.80	13.00
	5.00	6.00	8.00	10.00	12.00
dw	8.00	10.00	13.00	17.00	19.00
	6.80	8.80	11.30	15.60	17.20
Unit Weight	1.97	4.05	8.80	17.68	24.12

(All linear dimensions in mm)  
 (Unit Weight - Kg per 1000 pcs.)



Manufacturer of Steel & Stainless Steel Nuts



**TED**

ILANKA.

2252749

A4

