

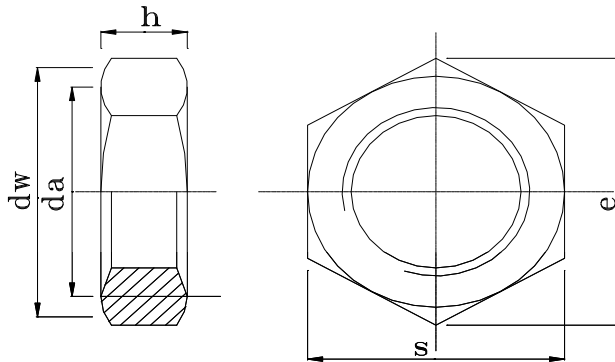
LANKA FASTENER LIMITED

PHASE 2, I.P.Z., KATUNAYAKE 11420, SRI LANKA.

Tel : + 94 (0)11 2252750 Fax : + 94 (0)11 2252749

PRODUCT SPECIFICATION : DIN 936
 PRODUCT RANGE : M5, M6, M8, M10, M12, M14, M16 & M20 in Steel
 M5, M6, M8, M10, M12, M14 & M16 in Stenless Steel
 Fine thread from M8

METERIAL	CARBON STEEL	STENLESS - A2	STENLESS - A4
Material Specification	1010 / 1015	304	316
Product Class	04 / 05	70	70
Proof Stress	400 - 500	700	700
Hardness (HRC)	18 - 25	22 - 34	22 - 34
Thread (ISO)	6H	6H	6H
Finish	Yellow / Blue Zinc & Plain	Passivated	Passivated
Proof load KN	As specified in ISO 898/2 & ISO 898 / 6		



Type of Measurements	M5	M6	M8	M10	M12	M14	M16	M20
S	8.00	10.00	13.00	17.00	19.00	22.00	24.00	30.00
	7.78	9.78	12.73	16.73	18.67	21.67	23.67	29.16
h	3.50	4.30	5.00	6.00	7.00	8.00	8.00	9.00
	3.20	3.70	4.70	5.70	6.64	7.42	7.42	8.10
e	9.23	11.54	15.00	19.61	21.92	25.38	27.69	34.62
	8.79	11.05	14.38	18.90	21.10	24.49	26.75	32.95
da	5.75	6.75	8.75	10.80	13.00	15.10	17.30	21.60
	5.00	6.00	8.00	10.00	12.00	14.00	16.00	20.00
dw	8.00	10.00	13.00	17.00	19.00	22.00	24.00	30.00
	6.90	8.90	11.60	15.60	17.40	20.50	22.50	27.70
Unit Weight	0.70	1.79	3.51	7.53	10.18	15.89	18.10	29.92

(All linear dimensions in mm)



Manufacturer of Steel & Stainless Steel Nuts

