

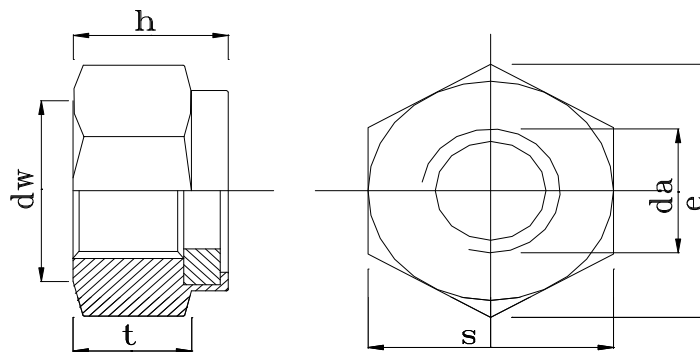
# LANKA FASTENER LIMITED

PHASE 2, I.P.Z., KATUNAYAKE 11420, SRI LANKA.

Tel : + 94 (0)11 2252750 Fax : + 94 (0)11 2252749

PRODUCT SPECIFICATION : DIN 982  
 PRODUCT RANGE : M4, M5, M6, M8, M10, M12, M14 & M16 in Steel and Stenless Steel  
 Fine thread from M8

METERIAL	CARBON STEEL	STENLESS - A2	STENLESS - A4
Material Specification	1010 - 1015	304	316
Product Class	8	70	80
Proof Stress	800	700	800
Hardness (HRC)	18 - 25	22 - 34	22 - 34
Thread (ISO)	6H	6H	6H
Finish	Yellow / Blue Zinc & Plain	Passivated	Passivated
Proof load KN	As specified in ISO 898/2 & ISO 898 / 6		



Type of Measurements	M4	M5	M6	M8	M10	M12	M14	M16
S	7.00	8.00	10.00	13.00	17.00	19.00	22.00	24.00
	6.85	7.78	9.78	12.73	16.73	18.67	21.67	23.67
h	5.90	6.30	8.00	9.50	11.50	14.00	16.00	18.00
	5.70	6.00	7.70	9.14	11.14	13.64	15.30	17.30
e	8.07	9.23	11.54	15.00	19.61	21.92	25.38	27.69
	7.74	8.79	11.05	14.38	18.90	21.10	24.49	26.75
t	3.70	4.60	5.80	6.80	8.40	10.70	12.40	14.40
	3.50	4.40	5.40	6.44	8.04	10.37	12.10	14.10
da	4.60	5.75	6.75	8.75	10.80	13.00	15.10	17.30
	4.00	5.00	6.00	8.00	10.00	12.00	14.00	16.00
dw	7.00	8.00	10.00	13.00	17.00	19.00	22.00	24.00
	5.90	6.90	8.90	11.60	15.60	17.40	20.50	22.50
Unit Weight	1.07	1.41	3.00	5.65	12.10	17.26	27.20	34.85

(All linear dimensions in mm)



Manufacturer of Steel & Stainless Steel Nuts

