

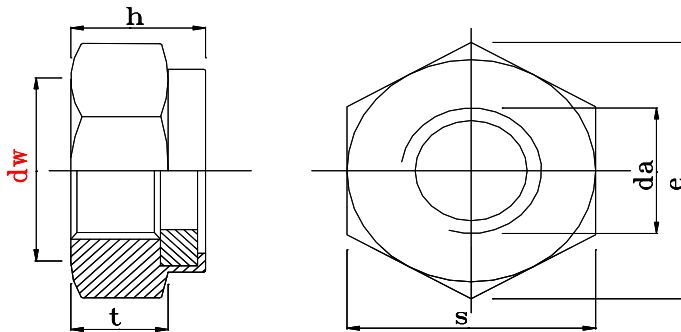
LANKA FASTENER LIMITED

PHASE 2, I.P.Z., KATUNAYAKE 11420, SRI LANKA.

Tel : + 94 (0)11 2252750 Fax : + 94 (0)11 2252749

PRODUCT SPECIFICATION : DIN 985
 PRODUCT RANGE : M3, M4, M5, M6, M8, M10, M12, M14 & M16 in Steel
 M3, M4, M5, M6, M8, M10, M12, M14 & M16 in Stainless Steel
 Fine thread from M8

METERIAL	CARBON STEEL	STENLESS - A2	STENLESS - A4
Material Specification	1010	304	316
Product Class	8	70	80
Proof Stress	800	700	800
Hardness (HRC)	18 - 25	22 - 34	22 - 34
Thread (ISO)	6H	6H	6H
Finish	Yellow / Blue Zinc & Plain	Passivated	Passivated
Proof load KN	As specified in ISO 898/2 & ISO 898 / 6		



Type of Measurements	M3	M4	M5	M6	M8	M10	M12	M14	M16
S	5.50	7.00	8.00	10.00	13.00	17.00	19.00	22.00	24.00
	5.32	6.78	7.78	9.78	12.73	16.73	18.67	21.67	23.67
h	4.00	5.00	5.00	6.00	8.00	10.00	12.00	14.00	16.00
	3.70	4.70	4.70	5.70	7.64	9.64	11.57	13.30	15.30
e	6.34	8.07	9.23	11.54	15.00	19.61	21.92	25.38	27.69
	6.01	7.66	8.79	11.05	14.38	18.90	21.10	24.49	26.75
t	2.70	3.18	3.50	4.50	6.00	7.00	9.00	10.00	12.00
	2.56	3.02	3.32	4.32	5.82	6.78	8.78	9.78	11.73
da	3.45	4.60	5.75	6.75	8.75	10.80	13.00	15.10	17.30
	3.00	4.00	5.00	6.00	8.00	10.00	12.00	14.00	16.00
dw	5.50	7.00	8.00	10.00	13.00	17.00	19.00	22.00	24.00
	4.60	5.90	6.90	8.90	11.60	15.60	17.40	20.50	22.50
Unit Weight	0.43	0.85	1.07	2.12	4.76	9.78	14.21	22.57	30.27

(All linear dimensions in mm)



Manufacturer of Steel & Stainless Steel Nuts

